

PART OF A



THE PERFECT PARTNER FOR YOUR FILE? CHALLENGE ACCEPTED.



X-Smart® Pro+

Endo Motor with Integrated Apex Locator

Shaping • **Cleaning** • **Obturation**



With up to 7.5 N·cm and 3,000 rpm, the X-Smart Pro+ endo motor **optimizes performance of Dentsply Sirona's endodontic file systems** in both **continuous rotation** and **reciprocating modes**.

Our **integrated apex locator** gives you confidence for an **accurate shaping experience**. And the **touchscreen interface** provides easy access to ideal settings for the files you choose, with **upgradeable firmware** to accommodate tomorrow's treatments.



BETTER TOGETHER.

Dentsply Sirona's endo file systems **perform significantly better*** when paired with the X-Smart[®] Pro+ motor.

WaveOne[®] Gold



**GENUINE
RECIPROCATING
MOTION**

Fine-tuned reciprocating motion for WaveOne[®] Gold and RECIPROC[®] family of files, with precise angulation, acceleration and speed for simplicity, safety and reliability.

ProTaper Ultimate[™]



**ABUNDANT
POWER**

Dedicated power and torque for optimal performance across a full range of anatomies with ProTaper Ultimate[™] and VDW.ROTATE[®] files.

TruNatomy[®]



**PRECISE SPEED
CONTROL AT
LOW TORQUE**

Constant, stable speed control at low torque for improved procedural control with TruNatomy[®] files, supporting structural dentin preservation.

*Compared to most leading competitive motors using ProTaper Ultimate[™] and WaveOne[®] Gold files. Internal data on file. For more information, contact Consumables-Data-Requests@dentsplysirona.com



PATENTED BRUSHLESS DC MOTOR CONTROL

Unlike the periodic feedback of brush and sensor-based motor control, X-Smart® Pro+ features a patented sensorless system for 360° speed and torque feedback. This smooth action results in quicker reaction times and higher file performance and safety even in challenging situations.



In **reciprocating** motion, the X-Smart® Pro+ reaches the apex **21% faster***



In **rotary** motion, the X-Smart® Pro+ reaches the apex **14% faster***

RESPONSIVE CONTROL.

A quality file matters. Wouldn't a quality motor matter too?

Our patented brushless DC motor control **responds to torque loads faster than competitors.*** Stabilizing the motion ensures optimal file performance.

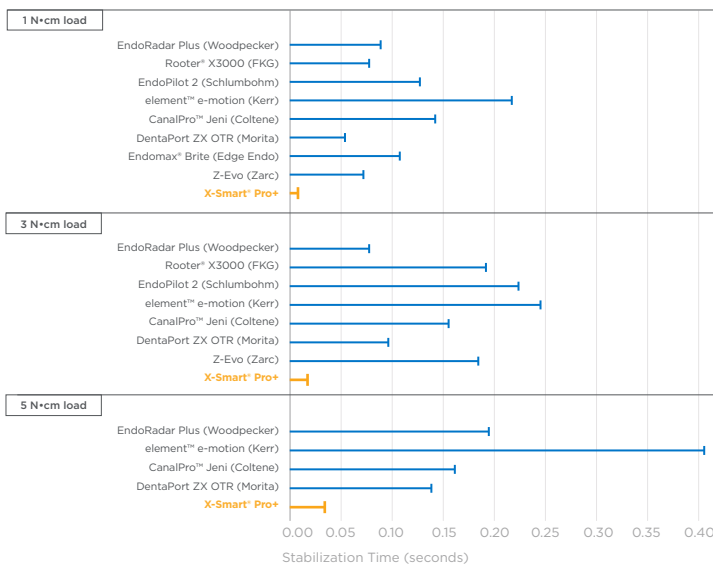


"We always talk about the file, but the motor is very important. It needs to respond to the different challenges with a rapid stabilization time for the file to constantly perform at its best."

Dr. Sarah Attal, DDS, Endodontist
DS Endo KOL

During lab testing, 37.5% of competitors tested using a reciprocating motion encountered ledging, fracture or unwinding.*

TIME TO FILE STABILIZATION WHILE UNDER TORQUE LOAD



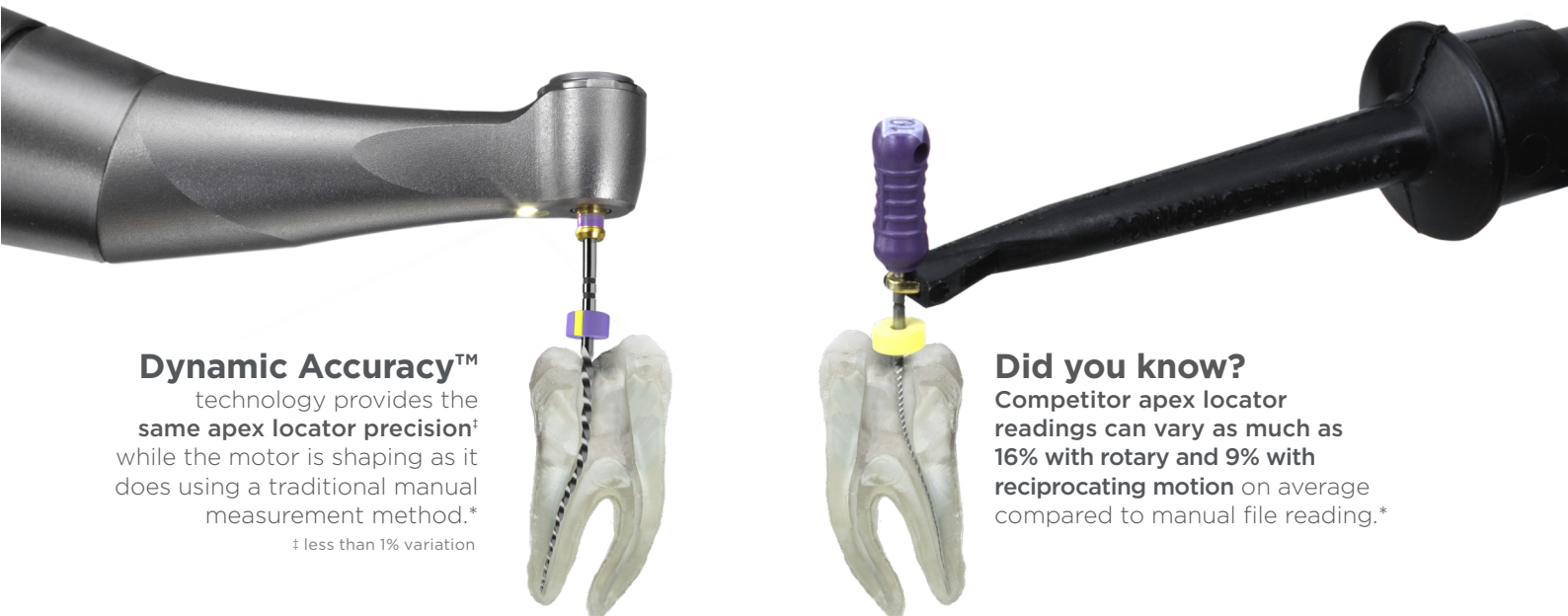
* Internal data on file. For more information, contact Consumables-Data-Requests@dentsplyirona.com



When shaping canals, you want to reach the apex precisely, as efficiently and safely as possible.

Our **Dynamic Accuracy™** technology allows for **direct length determination while actively shaping**, with auto-reverse function to keep your file on your desired target.

EFFICIENT PRECISION.



Dynamic Accuracy™ technology provides the **same apex locator precision†** while the motor is shaping as it does using a traditional manual measurement method.*
† less than 1% variation

Did you know? Competitor apex locator readings can vary as much as **16% with rotary and 9% with reciprocating motion** on average compared to manual file reading.*



“The X-Smart® Pro+ with integrated apex locator helps me organize my table and simplify my workflow. And when I pair it with my preferred sequence, ProTaper Ultimate™, I can use the slider for the initial route, canal scouting, gaining working length, and creating a glide path. It is the optimal setup.”

Dr. Laura Andriukaitiene, DDS, Endodontist
 DS Endo KOL

* Internal data on file. For more information, contact Consumables-Data-Requests@dentsplysirona.com

10.59 mm
Integrated
10-lumen LED

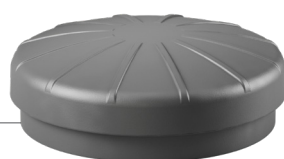
SUPERIOR VISIBILITY AND ACCESS

Locate and enter root canal with confidence
Easy treatment of patients with limited mouth opening*

360° adjustable position

USER-FRIENDLY TOUCHSCREEN INTERFACE

Large, easy-to-clean screen
Easy navigation with gloved hand
Up to 30 customizable file sequences with upgradable firmware to accommodate future file systems
Bluetooth® foot switch (optional)



COMPLETE FOCUS.

The X-Smart® Pro+ Endo Motor keeps you **focused on the procedure, not on the tools.** A streamlined workflow helps you do your best work.

ERGONOMIC DESIGN

Battery power to support a full day of work
Portable convenience with the power and functions of a tabletop unit
Drag and drop magnetic holder for enhanced comfort, reduced fatigue



REMOVABLE/AUTOCLAVABLE HANDPIECE METAL SHEATH

Comply with the latest infection control guidelines
Reduces waste, making handpiece barrier sleeves obsolete



* Compared to contra-angles with larger head height

Technical Specifications

- Reciprocating and rotary motions
- Includes file library with preset programs for WaveOne® Gold, ProTaper Ultimate™, TruNatomy® endodontic file systems
- Customizable file sequences, compatible with other endodontic files and instruments
- Auto-reverse rotation at preset torque limit and at doctor's desired working length
- On/Off button on the motor handpiece or optional wireless footswitch
- Calibration function (CAL) for precise torque setting
- 7" touchscreen interface
- Mini contra-angle with integrated 10-Lumen LED
- 360° adjustable position
- Lithium-ion battery
- Autonomous operation through a full day of work*
- Fully recharged in only 1.5 hour
- Motor can be run on battery only or can be recharged during treatment
- Universal charger (voltage 110–240, 50/60 Hz)
- Torque range: 0.2 N·cm – 7.5 N·cm
- Speed range: 100 rpm – 3,000 rpm
- Fully autoclavable handpiece sheath and contra-angle
- Upgradeable via Wi-Fi

* 10 treatments of 2 canals with 4 files per canal

Product Reference

X-SMART® PRO+/PRO MOTOR	
	<p>6779016 X-Smart® Pro+ Endo Motor with Integrated Apex Locator</p> <p>X-Smart® Pro+ Endo Motor with Integrated Apex Locator, Mini Contra Angle with Integrated LED, 360° Adjustable Position Stainless Steel Handpiece Sheath, Magnetic Handpiece Holder, Accessories Box (charger with universal power adapters), Lip Clip, File Clip, Y-Connector Cable</p>
	<p>6779008 X-Smart® Pro Endo Motor</p> <p>X-Smart® Pro Endo Motor only, Mini Contra Angle with Integrated LED, 360° Adjustable Position Stainless Steel Handpiece Sheath, Magnetic Handpiece Holder, Accessories Box (Charger with universal power adapters)</p>

ACCESSORIES	
6794536	X-Smart Pro+/Pro 5:1 contra-angle
6793462	X-Smart Pro+/Pro 5:1 contra-angle + handpiece sheath
6752401	X-Smart Pro+/Pro handpiece
6793439	X-Smart Pro+/Pro handpiece sheath
6770601	X-Smart Pro+/Pro handpiece holder
6793496	X-Smart Pro+/Pro battery (rechargeable)
6793512	X-Smart Pro+/Pro power supply (charger and cable)
6781798	X-Smart Pro+ Y-connector cable
6781806	X-Smart Pro+ file clip, 2 pieces
6781772	X-Smart Pro+ lip clip, 5 pieces
6779388	X-Smart Pro+/Pro wireless footswitch
6793538	X-Smart Pro+/Pro lubrication adapter
6793736	X-Smart Pro+/Pro adapter for DAC universal

TREATMENT SOLUTION MOTOR KITS	
	<p>B 00 XSP0 W1G KIT</p> <p>X-Smart® Pro WaveOne® Gold AH Plus Jet® Root Canal Sealer</p>
	<p>B 00 XSP0 PTL KIT</p> <p>X-Smart® Pro+ WaveOne® Gold AH Plus Jet® Root Canal Sealer</p>
	<p>B 00 XSP0 TNO KIT</p> <p>X-Smart® Pro+ WaveOne® Gold AH Plus Jet® Root Canal Sealer</p>
	<p>B 00 XSP0 PTL KIT</p> <p>X-Smart® Pro+ ProTaper Ultimate™ AH Plus Jet® Root Canal Sealer</p>
	<p>B 00 XSP0 TNO KIT</p> <p>X-Smart® Pro+ ProTaper Ultimate™ AH Plus Jet® Root Canal Sealer</p>
	<p>B 00 XSP0 TNO KIT</p> <p>X-Smart® Pro+ TruNatomy® AH Plus Jet® Root Canal Sealer</p>
	<p>B 00 XSP0 TNO KIT</p> <p>X-Smart® Pro+ TruNatomy® AH Plus Jet® Root Canal Sealer</p>

**Products may not be available in all markets.