

# B&L BIOTECH

*Where Innovation Meets Excellence*

**PRODUCT  
CATALOG**







**WHERE  
INNOVATION  
MEETS  
EXCELLENCE**

B&L Biotech was established by several dentists. These dentists, who specialize in endodontics, share a common goal of providing and improving the quality of treatment and patient care with unprecedented innovation, excellence, quality, service, and product development.

B&L is one of the fastest rising companies in the global dental community. B&L introduced the first cordless heated plugger system and gutta percha delivery system, known respectively as the B&L Alpha II and the B&L Beta. B&L offers many other innovative products including the patented micro-projection ultrasonic tip technology, and continues to strive to develop many more products.

B&L currently services over 40 countries. In May of 2010, B&L opened its first facility in the USA, just outside of Philadelphia, to better serve the global dental community. In December of 2014, B&L relocated its US branch to Northern Virginia

B&L Biotech continues to expand its pipeline of innovative products while maintaining quality, excellence, and service to the worldwide dental community.

- **Obturation Devices**
  - **Ultrasonic Tips**
- **Microsurgical Instruments**



**Cordless Obturation Devices**

SuperEndo- $\alpha^2$	4
Beta Mini / SuperEndo- $\beta$	6
BL-S Kondenser / BL-B Kondenser	8

**Cordless Curing Light**

B&Lite S	9
----------	---

**Endodontic Ultrasonic Tip with Micro-projections**

BL Tip	10
--------	----

**Removal of Broken Instruments / Troughing & Irrigation**

CK Tip	11
--------	----

**Post Removal Tip**

VIBRAPOST	11
-----------	----

**Implant Scaler Tip**

IS Tip	12
--------	----

**Endodontic Microsurgical Ultrasonic Tip with Micro-projections**

JETIP	13
-------	----

**Microsurgical Instruments**

JETIP Instrument	14
------------------	----

JETIP Instrument Suture Set

JetXchange Instrument Basic Set	16
---------------------------------	----

**Micro Mirror Set**

B&L Mirror	17
------------	----

**Bendable Periosteal Elevator for Surgical Treatment**

LeeTrac	18
---------	----

KimTrac	19
---------	----

Cordless Heat Source for Optimal Warm Vertical Condensation

# SuperEndo- $\alpha^2$



### Cordless

No limit on usage, reduces fatigue on hand and wrist.

### Balance

Great weight distribution for ease of use.

### Maximizes user convenience

Unique design that incorporates both cordless and ergonomic features.

### Hexagonal keyholes

Six keyholes on the connecting joint of the plugger safely secure and prevent rotation of the plugger during use.

### Starter Kit

SuperEndo-a2 with 3 pluggers (#55/.06, #55/.08, #55/.10), charging base, adapter, and power cord.

### Item Code

#### Alpha Starter Kits

ASKB(Black), ASKW(White), ASKP(Pink)

#### Alpha Units and Accessories

Main Device : BAMB(Black), BAMW(White), BAMP(Pink)

Charging Console : BACCB(Black), BACCW(White), BACCP(Pink)

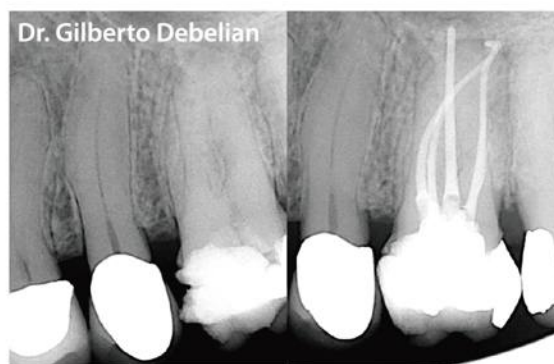
Battery : BAB

Power Cord : BPC

AC Adapter with Cord and Plug : BAA

AC Adapter Antistatic Cap : BAACB(Black), BAACW(White)

Plugger Protect Sleeve(10EA) : BPPS



Accessories for SuperEndo-a<sup>2</sup>

# Baek's Plugger

Baek's Pluggers for SuperEndo-a<sup>2</sup>

Wide varieties to choose from : 13 items, including pluggers, spreaders, and a hot testing tip.



BP3004  
#30/.04  
Blue



BP3504  
#35/.04  
Blue



BP4004  
#40/.04  
White



BP4504  
#45/.04  
Yellow



BP5004  
#50/.04  
Yellow



BP5506  
#55/.06  
Red



BP5508  
#55/.08  
Red



BP5508L  
#55/.08  
Long Type  
Red



BP5510  
#55/.10  
Green



BP6012  
#60/.12  
Green



SPRDN  
Spreader/  
Narrow  
Black



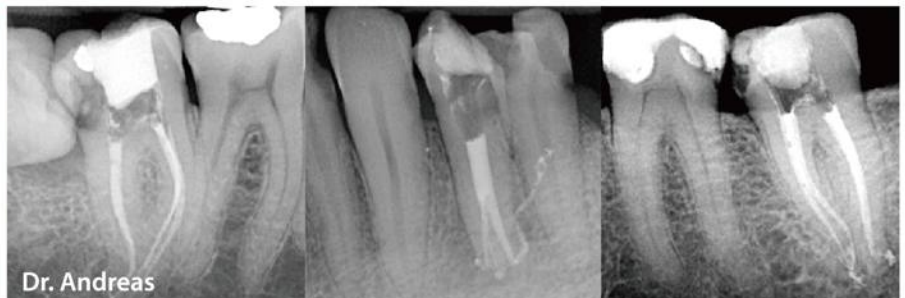
SPRDS  
Spreader/  
Standard  
Black



HTT  
Hot Testing Tip



Hot Testing Tip



Dr. Andreas

Cordless Gutta Percha Heating and Delivery System for Optimal Backfill

# Beta Mini

**NEW** *Smaller size  
Greater convenience*



# SuperEndo-β



### Cordless

No limit on usage, reduces fatigue on hand and wrist

### Balance

Great weight distribution for ease of use

### Unique design and engineering

Incorporates 360 degree swivel needles, as well as cordless and ergonomic features, to maximize user convenience.

### Secondary safety feature against accidental burns

Thermal protector cap prevents accidental burns from a hot needle

### Starter Kit

Beta mini or SuperEndo-B with needle pack  
(24mm/20G 2EA, 24mm/23G 4EA, 24mm/25G 2EA), 2 cleaning brushes,  
3 thermal protectors, needle bender/wrench, 1 pack of GP (100EA, regular type),  
plunger, charging base, adapter, and power cord.

### Item Code

#### Superendo - β Starter Kits

BSKB(Black), BSKW(White), BSKP(Pink)

#### Beta Units and Accessories

Main Device : BBMB(Black), BBMW(White), BBMP(Pink)  
Charging Console : BBCCB(Black), BBCCW(White), BBCCP(Pink)  
Thermal Protector(3EA) : BTP  
Plunger Assembly : BPA  
Beta Silicon Cover : BSC

#### Beta Mini Starter Kits

ESKB(Black), ESKW(White), ESKP(Pink)

#### Beta Mini Units and Accessories

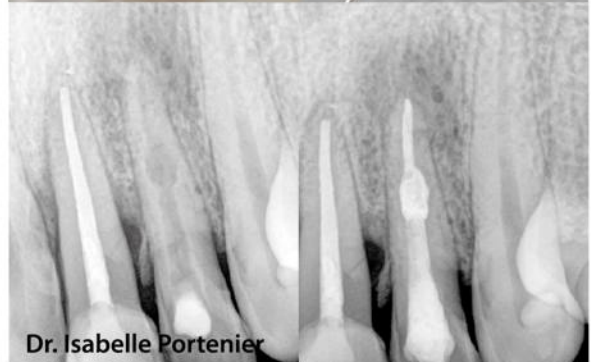
Main Device : EBMB(Black), EBMW(White), EBMP(Pink)  
Charging Console : EBCCB(Black), EBCCW(White), EBCCP(Pink)  
Thermal Protector(3EA) : ETP  
Plunger Assembly : EPA  
Cover : ESC

#### Beta/Beta Mini Compatible Accessories

Battery : BBB  
Cleaning Brush(2EA) : BCB  
Needle Bender/Wrench : BMT  
Needle Protector Sleeve(10EA) : BNPS  
Power Cord : BPC  
AC Adapter with Cord and Plug : BAA  
AC Adapter Antistatic Cap : BAACB(Black), BAACW(White)



Needles swivel for easy access





Accessories for SuperEndo-β / Beta Mini

# Needle



20G

23G

25G



Needles for SuperEndo-β, Beta Mini

Gauge	Length	Item Code
20 G	22 mm	BSN2220
20 G	24 mm	BSN2420
20 G	28 mm	BSN2820
20 G	50 mm	BSN5020 (VET)
23 G	21 mm	BSN2123
23 G	24 mm	BSN2423
23 G	28 mm	BSN2823
25 G	22 mm	BSN2225
25 G	24 mm	BSN2425
25 G	26 mm	BSN2625

Multibending Needles for SuperEndo-β, Beta Mini

Gauge	Length	Item Code
20 G	24 mm	BMN2420
23 G	24 mm	BMN2423
25 G	24 mm	BMN2425



Multi bending needles can be bent multiple times.



Item Code  
Brush : BCB



Item Code  
Needle Bender/Wrench : BMT

Accessories for SuperEndo-β / Beta Mini

# Gutta Percha Pellet

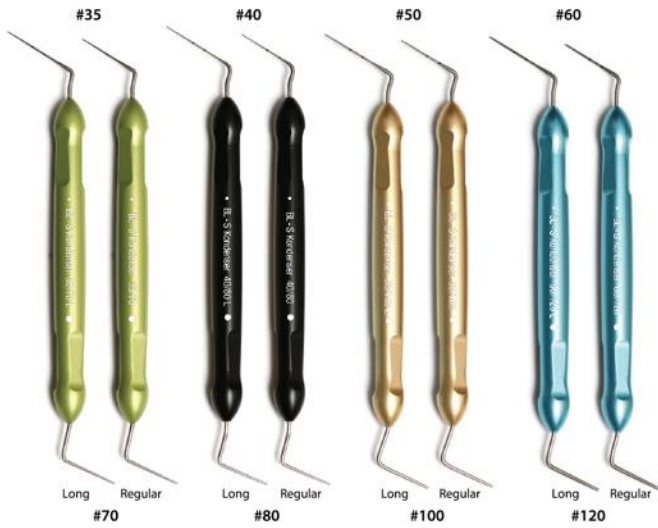


Gutta Percha Pellets for SuperEndo-β, Beta Mini

Type	Quantity of GP	Item Code
Soft	100 EA	BGPSOFT
Regular	100 EA	BGPREG
Hard	100 EA	BGPHARD

# Condensation of Obturation Material

## BL-S Kondenser



### Wide variety

BL-S Kondensers are available individually or in a full set of 4.

### Efficiency of use

Handles are color-coded by size allowing faster selection of the desired condenser.

### Range of use

BL-S Kondensers are great for any type of canal anatomy.

### Multipurpose features

The flexible end is made of nickel titanium and can be used for treatment in curved canals. The other end is made of stainless steel and is ideal for compaction in the coronal and middle thirds of the canal.

### Lightweight design

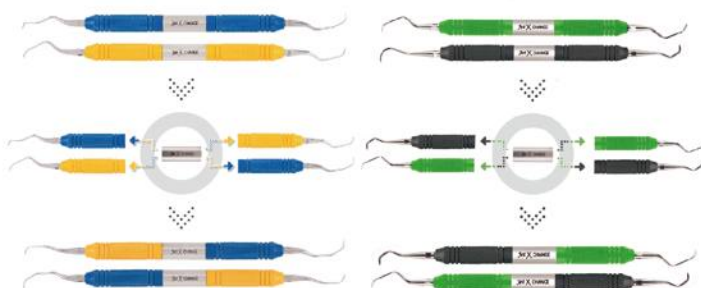
Handles are designed to fit comfortably into the natural grip of the user.

### Increased control

Dimpled grips allow the condenser to be held firmly, increasing the amount of control the user has

### Autoclavable

Product information	BL-S Kondenser Item Code	BL-B Kondenser Item Code
SET of 4 (35, 40, 50, 60)	BCONSET / BCONSET Long Type	BKXSET / BKXSET Long Type
35 NiTi / 70 SS	BCON35 / BCON35 Long Type	BKX35 / BKX35 Long Type
40 NiTi / 80 SS	BCON40 / BCON40 Long Type	BKX40 / BKX40 Long Type
50 NiTi / 100 SS	BCON50 / BCON50 Long Type	BKX50 / BKX50 Long Type
60 NiTi / 120 SS	BCON60 / BCON60 Long Type	BKX60 / BKX60 Long Type



Customizable condenser

## BL-B Kondenser



### Wide variety

BL-B Kondensers are available individually or in a full set of 4.

### Efficiency of use

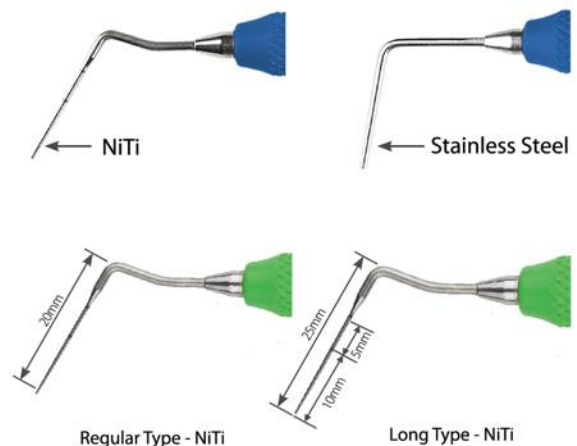
Handles are color-coded by size allowing faster selection of the desired condenser.

### Range of use

BL-B Kondensers can be used for compact filling in any root canal variations.

### Multipurpose features

The flexible end is made of nickel titanium and can be used for treatment in curved canals. The other end is made of stainless steel and is ideal for compaction in the coronal and middle thirds of the canal.



NiTi flexible end

# Cordless Curing Light B&Lite S

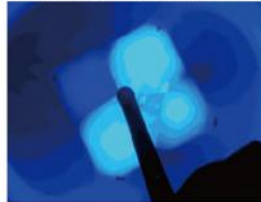


## Uniformity and concentration of light level and power

- Large discrepancies in the indicated and actual light levels have been observed in devices manufactured by other companies.



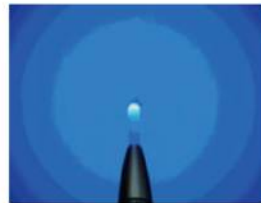
B&Lite eS  
Excellent focusing power and uniformity



A company  
Insufficient beam uniformity



B company  
Blurred focus



C company  
Blurred focus

## Accessibility

The small head of B&LiteS allows the clinician to properly position the curing light in all areas of the mouth with better visibility, without any discomfort to the patient.



B&Lite S



Other Company

The smallest profile head for curing light allows wider visibility.

## Special Features

- Uniformity & concentration of light level and power
- Multiple mode options (NORM, FAST, SOFT, ORT1, ORT2)
- Accessibility
- 360 degrees rotation of light probe
- Replaceable probe
- Battery power level does not affect the performance of B&LiteS even if the battery is low, the quality of light irradiation is consistent.
- \* Light irradiation levels of the devices were measured using a radiometer from Gigahertz-Optik.

## Multiple Mode Description



### - General Composite Filling Mode (NORM)

Optical output : 800mW/cm



### - Fast Mode (FAST)

PEDO Composite filling Mode  
Optical output : 1200mW/cm



### - Soft Start Mode (SOFT)

After gradually increasing, maintain the output level until finished use  
Optical output : 0 to 1200mW/cm



### - Orthodontic Mode-1 (ORT1)

For Orthodontic brackets.  
Optical output : 1800mW/cm



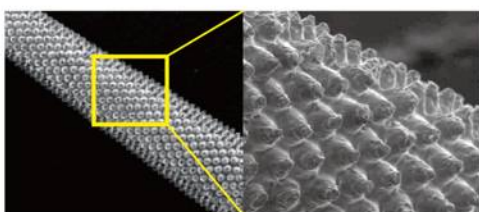
### - Ortho Mode-2 (ORT2)

Optical output : 2700mW/cm

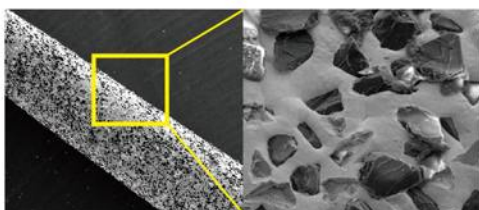
B&Lite S and Accessories	Item Code
B&LiteS Kit	CL-SBL
Light Probe for B&LiteS	CL-SLP
Light Probe Thermal Guard for B&LiteS	CL-SLG
Battery Pack	CL-GBP
Charging Stand	CL-GCS
Charging Stand Base	CL-GCG
AC Power Adapter	CL-GPA
Light Shield	CL-GAS

## Endodontic Ultrasonic Tip with Micro-projection

# BL TIP



BL TIP with Micro-projections



Diamond Coated Tip

### Manageable Elimination with a Variety of Shapes and Sizes

The ends of the BL Tips come in a variety of shapes and sizes, making it convenient for the doctor to effectively control the amount of dentin removal.

100µm Micro-projections : ideal for removing larger quantities of dentin.

50µm Micro-projections : ideal for more precision-based refinement.

### Versatility

BL Tips are useful not only in accessing the root canal, but also in enlarging the coronal aspect of the root canal because the end of the tip works in every direction.

### Item Code

Starter Kit : BLSKA(BL1,3,5 Satelec), BLSKE(BL1,3,5 EMS)

EMS

BL1E, BL3E, BL5E

Satelec

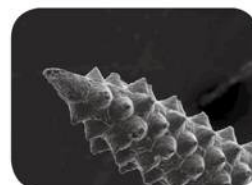
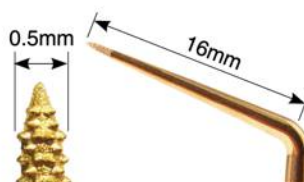
BL1A, BL3A, BL5A

### B&L Endodontic Ultrasonic Tip

#### Longevity and Safety with Micro-projections

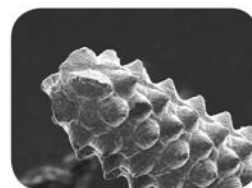
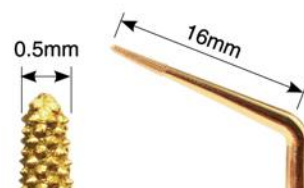
BL Tips have sharp abrasive micro-projections integrated onto the main body of the tip.

Unlike conventional diamond-coated endodontic tips whose coating wears off during surgery, BL Tips are more resilient and efficient in cutting.



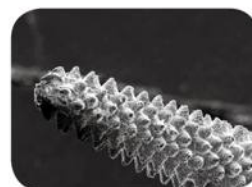
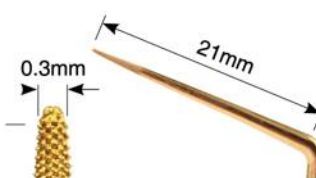
#### BL-1 (100µm Micro-projections)

Removal of pulp stone, calcified dentin. Location of the MB2 canal and hidden canals Removal of gutta percha and paste materials.



#### BL-3 (100µm Micro-projections)

Use at a higher power, higher speed. Removal of secondary dentin and pulp stones. Resistance to breakage.



#### BL-5 (50µm Micro-projections)

Smaller & longer than BL-1

Sharper and longer shape allows efficient preparation of the coronal half of the canal and creates a space for the insertion of a file.

### Appropriate power level

Item Code	Power Level
BL-1	20% - 30%
BL-3	10% - 20%
BL-5	Under 20%
EMS	Under 10%

E-Type not available for sale in the US.

## Removal of Broken Instruments / Troughing & Irrigation

# CK Tip



CK TIP with CK TIP-File  
for Irrigation

CK TIP with CK TIP-Needle  
for Troughing

### For ultrasonic energy in a root canal

Ultrasonic vibration through a file ensures an efficient cleaning of the root canal system through acoustic micro-streaming.

Compatibility	Bent Angle	Item Code
EMS scaler	120°	CK1E
SATELEC scaler		CK1A
EMS scaler	90°	CK2E
SATELEC scaler		CK2A

E-Type not available for sale in the US.

### CK Tip-Needle

Removal of separated files.

Useful in removing dentin. (troughing)

Isthmus control.

Before working with the Vibrapost, use the CK TIP-Needle to trough around the post allowing the Vibrapost to work more efficiently.

### CK Tip-File

Irrigation File #20

Item Code	Recommended Power Level
CKF20	10%

### Item Code

CK Chuck Tip : CK1E, CK2E, CK1A, CK2A

CKTip-File(Irrigation File #20) : CKF20

CKTip-Needle : CKN

## Post Removal Ultrasonic Tip

# VIBRAPOST



### The best choice for removing a post from a root canal

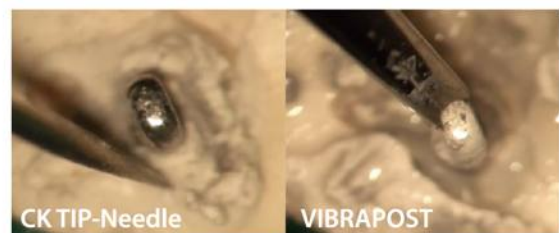
The most efficient shape to constantly deliver the highest ultrasonic energy.

Recommended Power Level	Item Code
60% Power	VP-A(SATELEC)
	VP-E(EMS)

E-Type not available for sale in the US.

### Caution!

In order to avoid potential damage to the periodontal ligament from excessive heat, be sure to work with water and refrain from engaging the post for more than 15 seconds at a time.



# Implant Scaler Tip

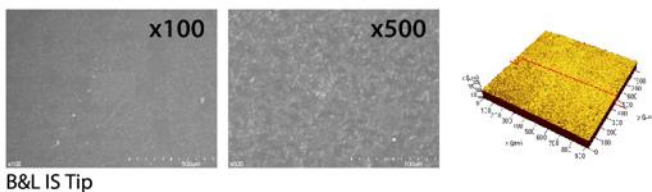
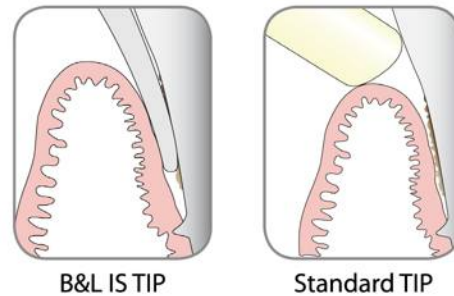
## IS TIP



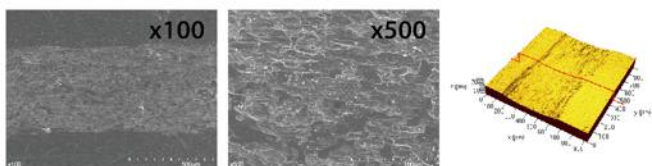
### The dependable choice for peri-implant tissue management

#### Why choose B&L's implant scaler tip?

- Metallic ultrasonic tip designed for scaling polished implant surfaces.
- Compatible with electric piezo unit.
- Optimal scaling efficiency with minimal abrasiveness to the external polished surface of the implant.
- Ideal periodontal management of implant.
- Safer and more efficient than other plastic and titanium implant curettes.
- Ideal for removal of residual cement.



B&L IS Tip



Stainless Steel Tip

#### Sharpness

Avoids excessive opening of the gingival sulcus.

#### Usage

- Ideal for periodontal maintenance of the implant.
- Ideal for treatment of peri-implantitis.
- Ideal for removal of excess cement.

#### Accessibility

Provides easier access to the distal lingual gingiva of a molar. Bendable tip point can be used to reach hidden areas.

#### Disposable

##### Item Code

- STS5A(SATELEC compatible)
- STS5E(EMS compatible)

#### Reference

- Unursaikhan O, Lee JS, Cha JK, Park JC, Jung UW, Kim CS, Cho KS, Choi SH. Comparative evaluation of roughness of titanium surfaces treated by different hygiene instruments, J Periodontal Implant Sci. 2012;42(3):88-94
- Baek SH, Shon WJ, Bae KS, Kum KY, Lee WC, Park YS, Evaluation of the safety and efficiency of novel metallic ultrasonic scaler tip on titanium surfaces. Clin Oral Implants Res. 2012;23(11):1269-74.
- Chun KA, Kum KY, Lee WC, Baek SH, Choi HW, Shon WJ. Evaluation of the safety and efficiency of novel metallic implant scaler tips manufactured by the powder injection molding technique. BMC Oral Health. 2017;11;17(1):110
- Seol HW, Heo SJ, Koak JY, Kim SK, Baek SH, Lee SY, Surface alterations of several dental materials by a novel ultrasonic scaler tip, Int J Oral Maxillofac Implants. 2012;27(4):801-10



Tip Valet

## Microsurgical Ultrasonic Tip with Micro-projection

# JETIP



### Bending Jig

Optional Length and Angle

The Bending Jig is made of a soft material in order to provide clinicians the freedom to bend the JETIP to different angles and lengths without damaging the micro-projections.

The Bending Jig has five depths(3, 4, 5, 6, and 7mm) allowing clinicians to bend the tip to different lengths.

One aperture may be used up to 2-4 times.

### Bendable Apical Surgery Tips

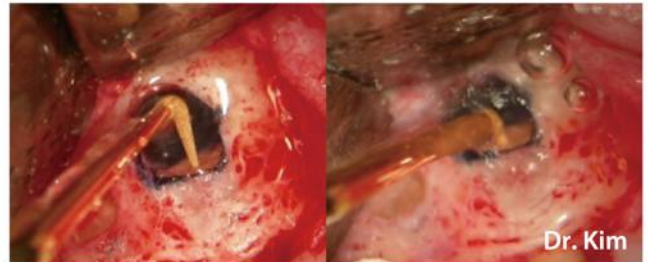
JETIP is an apico surgery tip that allows clinicians to bend the tip to any length and angle to suit their surgical needs.



### Versatility

JETips have a variety of shapes and sizes, so users can effectively control the amount of gutta percha and dentin removal.

They remain stable during the removal of gutta-percha.



### Longevity and Safety with Micro-projection

JETIPs have sharp, abrasive micro-projections integrated onto the main body of the tip.

Unlike conventional diamond-coated endodontic tips whose coating wears off during surgery, tips with micro-projections are more resilient and efficient in cutting.

### Appropriate power level



### JT-2 series for Micro-Surgery (Anterior, Posterior)

Bent Body Angle: 150° (All JT-2 series tips)

Micro-projection Size: 50µm

JT-2S	90	down
JT-2L	90	to the right
JT-2R	90	to the left
JT-2B is Bendable Tip		

### Item code

Full set : JT2FA(Satelec), JT2FE(EMS)

JT-2 : EMS

JT2SE(Straight), JT2LE(Left), JT2RE(Right), JT2BE(Bendable)

Satelec

JT2SA(Straight), JT2LA(Left), JT2RA(Right), JT2BA(Bendable)

### Ultrasonic Tip Accessories



**Bending Jig for JETIP Bendable Type**  
Item Code : JTBJ



**Wrench for Ultrasonic Tips**  
Item Code : WR01

Microsurgical Instruments

# JETIP Instrument



**JETIP Instrument Basic Set**

**JETIP Instrument for Microsurgery**

- Color Coded by Procedural Steps
- Comfortable Grip
- Sleek Design

**Basic Set**(Aluminum or Titanium Handle) Item Code :JISSB / TJISSB

Silver	JX1, JX2, JX5, JEX, JPP
Gold	JE1, JE2, JE3, JE4
Blue	JC1, JC2, JC3, JC4, JC9, JC10, JC11, JC12, JC13, JC14, JC15, JC16
Green	JM1, JM2, JM3, JM4, JB2, JP3, JP6, JP7
Micro Mirror	JIMM1, JIMM2, JIMM3, JIMMH
MTA Pallet	MTAP
B&L Wrench	WR01
Cassette	JISC2

**Essential Set**(Aluminum or Titanium Handle) Item Code : JISSE / TJISSE



Silver	JX1, JX2
Gold	None
Blue	JC15, JC16
Green	JB2, JP3, JM3, JM4, JP6, JP7
Micro Mirror	JIMM1, JIMM2, JIMM3, JIMMH
MTA Pallet	MTAP
B&L Wrench	WR01
Cassette	JISC2

**JETIP Instrument Handle**

Titanium Handle Set & Aluminum Handle Set

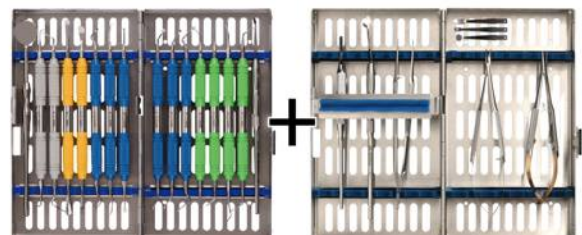


Titanium Handle

Aluminum Handle

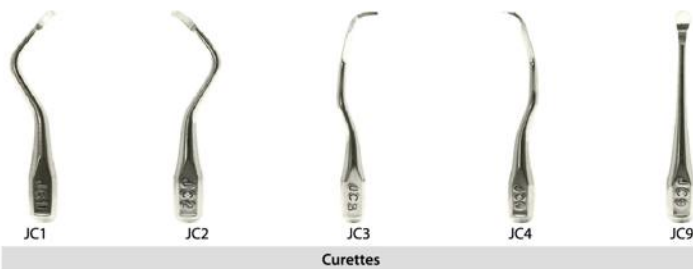
**Deluxe Set** (Aluminum or Titanium Handle) Item Code : JISSD/ TJISSD  
JetXchange Instrument Item Code : JXSSD

JETIP Instrument Basic Set + JETIP Instrument Suture Set  
or JetXchange Instrument Basic Set





# List of JISS Tips



**Silver Handle**  
(for examination)

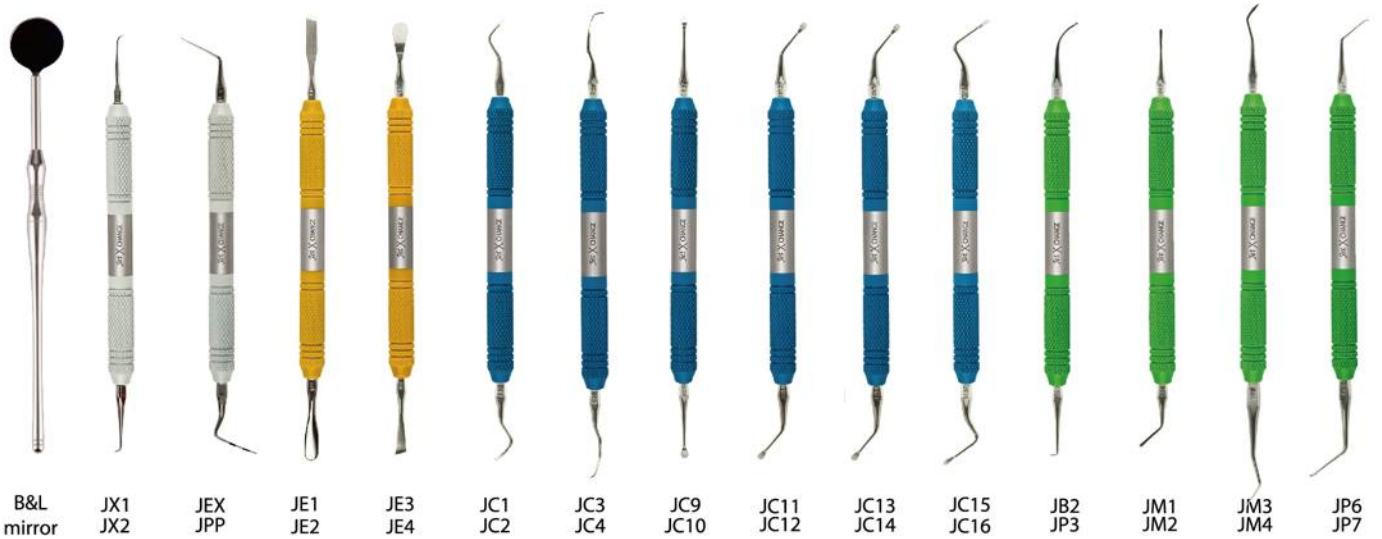
**Gold Handle**  
(for flap elevation)

**Blue Handle**  
(for curettage)

**Green Handle**  
(for root-end filling)

Microsurgical Instruments

# JetXchange Instrument Basic set



B&L mirror    JX1 JX2    JEX JPP    JE1 JE2    JE3 JE4    JC1 JC2    JC3 JC4    JC9 JC10    JC11 JC12    JC13 JC14    JC15 JC16    JB2 JP3    JM1 JM2    JM3 JM4    JP6 JP7

### JetXchange Instrument Basic Set for Microsurgery

Customizable to your needs  
Lightweight and better grip  
Interchangeable handles



Item Code : JXSSB

Microsurgical Instruments

# JETIP Instrument Suture Set



Castroviejo JICV    Micro scissors JIMS    Tissue forcep JITF    Blade handle JIBH    Micro mirror handle JIMMH    Micro mirrors JIMM 1,2,3    MTAP

### Suture Set for Microsurgery

Set of most used instruments - includes a castroviejo, a micro scissor, a tissue forcep, a blade handle, three micromirrors, a MTAP, as well as the micromirror handle.

With high durability, it can be used longer despite many cleanings and sterilizations.

The ergonomic grip helps a dentist perform surgery longer without fatigue.



Item Code : JISSS

# Micro Mirror Set



## Double-Sided Mirror

# B&L Mirror



Package (10ea)

Item Code	Product Name
BMM	B&L Mirror
BMH	B&L Mirror Handle

## Reflective Periosteal Elevator for Surgical Treatment

# Leetrac

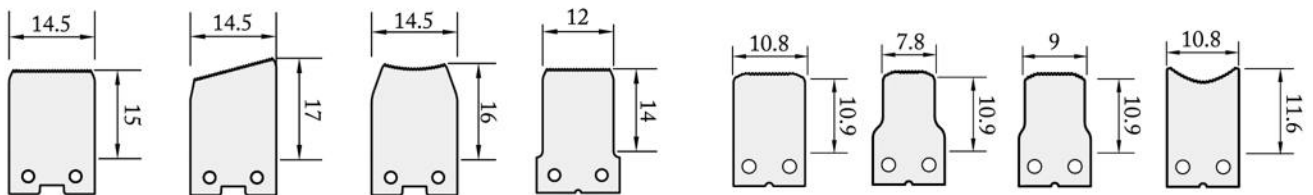


[Wide]



[Narrow]

### Changeable Blade



Blade type	LTRBS	LTRBT	LTRBR	LTSBS	LTNBS	LTNBN	LTNBT	LTNBP
	[Wide]				[Narrow]			

### Reflective Surface

The mirrored surface of the blade makes it easier to view the surgical area, without the need of a secondary tool.

### Serrated Edges

Stably secures the cortical bone plate, regardless of its shape, due to the saw-toothed wheel at the end of each blade.

### Various Shapes

Four different types of blade available for each wide and narrow handles. Each blade can be interchangeable depending on the needs of each surgery.

### Item Code

#### Wide type

Set: LTRNS (LRTNH, LTRBS, LTRBT)

Handle: LRTNH (Wide handle)

Accessories: LTRSS (Autoclaving cap 1EA), LTRWT (Leetrac wing 1EA)

#### Narrow type

Set: LTNNS (LRNNH, LTNBS, LTNBN)

Handle: LRNNH (Narrow handle)

Accessories: LTNSS (Autoclaving cap 1EA), LTNWT (Leetrac wing 1EA)



Autoclaving cap  
(LTRSS/LTNSS)

Leetrac wing  
(LTRWT/LTNWT)

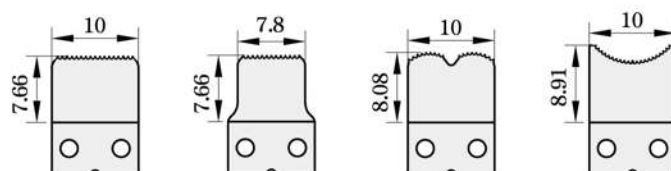


Bendable Retractor for Surgical Treatment

# KimTrac



## Blades



Ni-Ti type	KTN1N	KTN2N	KTN3N	KTN4N
SUS type	KTN1S	KTN2S	KTN3S	KTN4S

### Shape Memory (Ni-Ti model)

- After the blade is bent, the blade will return to its original shape after sterilizing at a high temperature in the autoclave.

### Excellent handle grip and blade with serrated edges

- Handle: It is ergonomically designed to reduce the fatigue when holding the handle for long periods of time.
- Blade: Depending on the appearance of the sebaceous bone, a variety of sizes and shapes of the blades can be selectively used. The serrated edges of the blade are able to secure the sebaceous bone. It avoids slipping into the gum and tearing the reflected tissue.

### Various shapes

- 4 types of blades can be selectively used by the shape and angle of the surgical site.

### Advantages of Kimtrac wing

- Kimtrac wing can be used in the operation field to enlarge the size of the retraction and provide additional visibility.
- Made from soft material to avoid bruising around the patient's mouth.

### KimTrac Item Code

#### • Ni-Ti type

Set : KTNNS(KTN1N,KTNNH)

Accessories : LTNSS(Autoclaving Cap) 1EA, LTNWT(Wing) 1EA, KBJ(KimTrac Bending Jig) 1EA

#### • SUS type

Set : KTNSS(KTN1S,KTNNS)

Accessories : LTNSS(Autoclaving Cap) 1EA, LTNWT(Wing) 1EA, KBJ(KimTrac Bending Jig) 1EA



Autoclaving cap (LTNSS)



Kimtrac wing (LTNWT)



Kimtrac bending jig (KBJ)

## Contact Information

### Global Sales

Bruce D. Shefsky  
bdshefsky@bnlbio.com

### Latin America Sales

Dr. Lissette Ramirez  
drlissetteramirez@bnlbio.com

### Repair Center

**Global** B&L Biotech, Inc.  
support@bnlbio.com

**U S A** B&L Biotech USA, Inc  
customerservice@bnlbio.com



View video clips at <https://www.video.bnlbio.com/>

### B&L Biotech, Inc.

#502, 95 Gwangdeokdong-ro, Danwon-gu,  
Ansan-si, Gyeonggi-do, Korea 15462  
E-mail: support@bnlbio.com  
FAX: +82 (0) 31-401-4060

### B&L Biotech USA, Inc.

3959 Pender Drive, #350, Fairfax, VA, 22030 USA  
TEL: +1 (703) 272-7507  
FAX: +1 (703) 272-7598



**PRODUCT  
CATALOG**



*Where Innovation Meets Excellence*

**B&L Biotech USA, Inc.**

3959 Pender Drive, #350, Fairfax, VA, 22030 USA  
TEL: +1 (703) 272-7507 | FAX: +1 (703) 272-7598  
WEBSITE: [www.bnlbio.com](http://www.bnlbio.com)

*Where Innovation Meets Excellence*

**B&L Biotech, Inc.**

#502, 95 Gwangdeokdong-ro, Danwon-gu, Ansan-si, Gyeonggi-do, Korea 15462  
E-mail: [support@bnlbio.com](mailto:support@bnlbio.com) | FAX: +82 (0) 31-401-4060