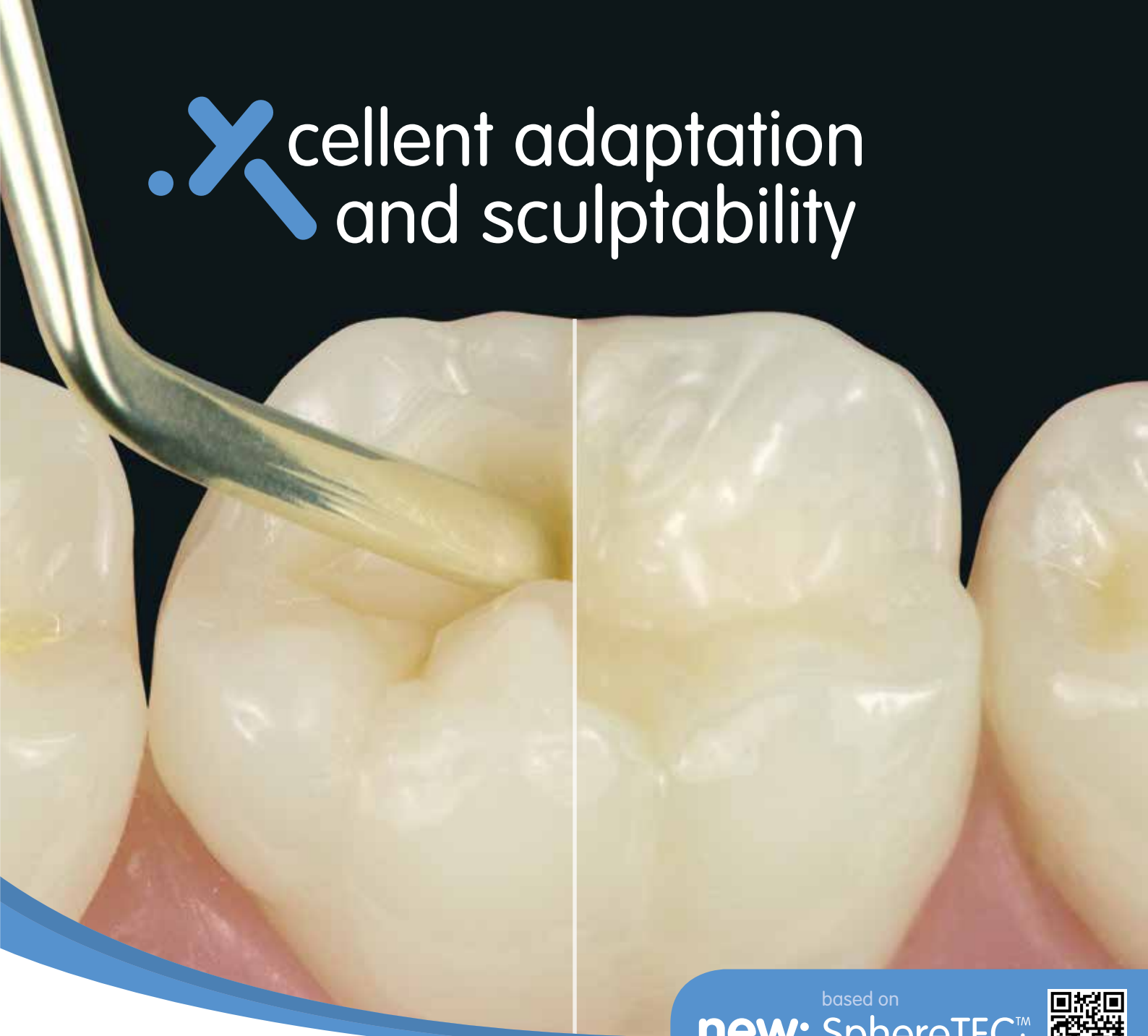


Excellent adaptation and sculptability



based on
new: SphereTEC™
www.dentsply-spheretec.com



ceram .x[®]
universal nano-ceramic restorative



**The unique SphereTEC™ technology
takes handling comfort to the next level.**

- Ingenious simple shading system: 5 shades to cover the full VITA®¹ range
- Fast and easy polishing for outstanding gloss
- Natural aesthetics

For better dentistry

DENTSPLY



ceram.x[®]
universal nano-ceramic restorative

.xceptional handling

A new filler technology containing granulated spherical fillers in combination with an optimised resin matrix system results in preferred handling properties:

- adapts easily to cavity surfaces
- doesn't stick to hand instruments
- easy to sculpt
- slump resistant



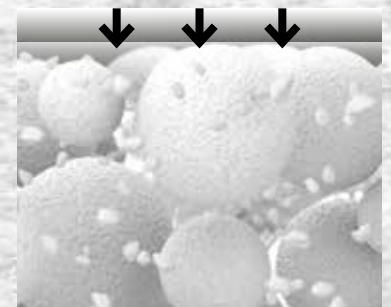
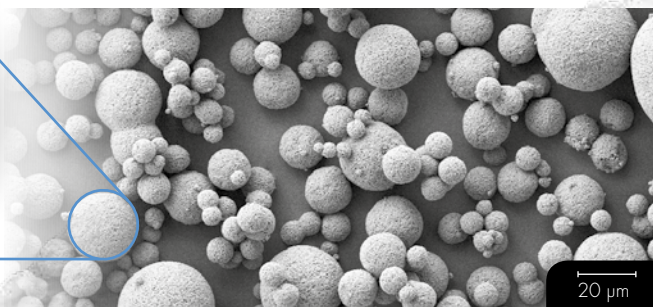
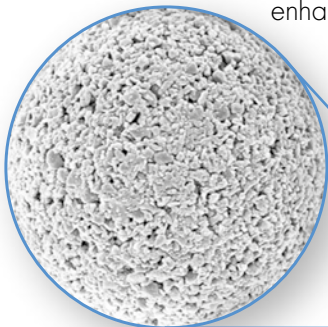
.xplore the novel filler technology

SphereTEC[™]

Watch now!



ceram.x[®] universal is based on the advanced granulated filler technology SphereTEC[™] which is patent applied. SphereTEC[™] stands for the process of manufacturing microscaled, well-defined spherical superstructures, comprising of submicron glass. The SphereTEC[™] fillers' morphology, particle size distribution and surface microstructure are key for the enhanced handling comfort and aesthetic outcome.



Microstructured surface of a SphereTEC[™] filler (d_{3.50} ~15μm), obtained via spray-granulation process from submicron glass fillers.

SEM picture showing SphereTEC[™] spherical prepolymerised fillers providing a ball-bearing effect that enables excellent adaptation and sculptability.

The micro-granulated structure of SphereTEC[™] is able to bind more free resin compared to usual fillers. Therefore ceram.x[®] does not stick to hand instruments.

“Perfect shade match and optimum sculptability at the same time!”

Dr. Wilhelm Bestler, Germany

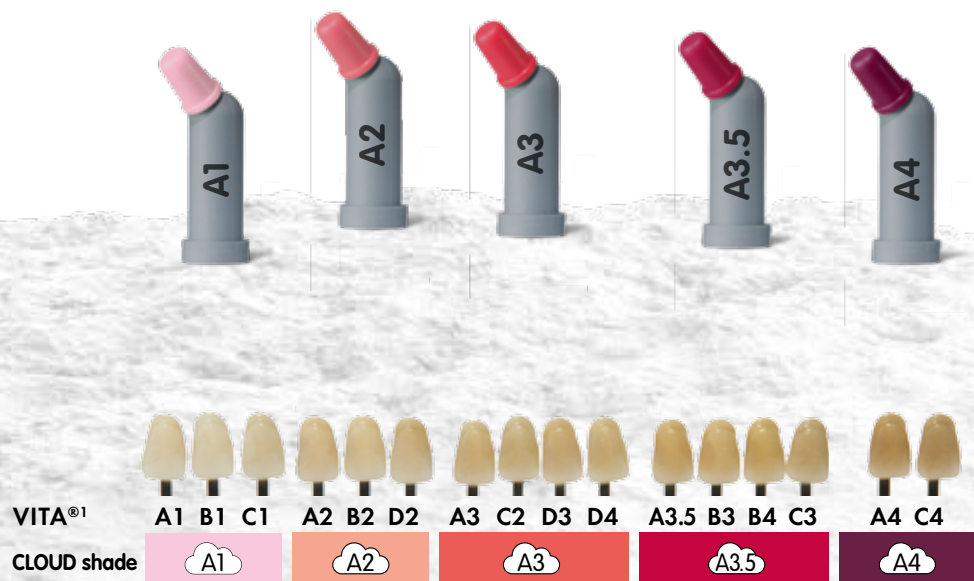


.x tremely simple

CLOUD shade concept

The new CLOUD shade concept is designed to achieve shade match with the full range of VITA^{®1} shades with a minimised number of universal shades. ceram.x[®] containing five CLOUD shades of moderate translucency named A1 to A4.²

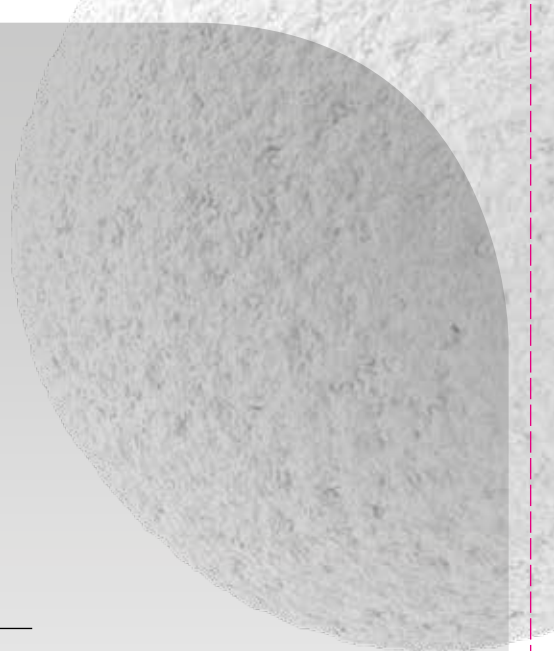
- 5 CLOUD shades cover the full VITA^{®1} range
- Reliable shade match thanks to a distinct chameleon effect
- Smart iShade label for a quick translation into VITA^{®1}



¹ VITA[®] is not a registered trademark of DENTSPLY International Inc.

² Additionally ceram.x[®] comprises one bleach white shade for the restoration of bleached teeth.

ceram.x[®] – the universal nano-ceramic composite for all cavity classes.



.xperience the

fast and easy polishing

ceram.x[®] provides a fast and easy polishing procedure with both, silicon based polishers and abrasive discs, resulting in an outstanding gloss.²



After preparation



After finishing



After 20 sec. polishing

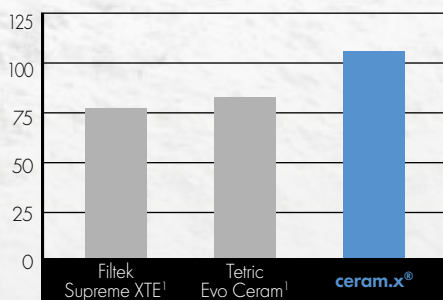
.xtra strong for

long lasting restorations

ceram.x[®] is the ideal universal composite for durable stress bearing posterior restorations.

Flexural strength² [MPa]

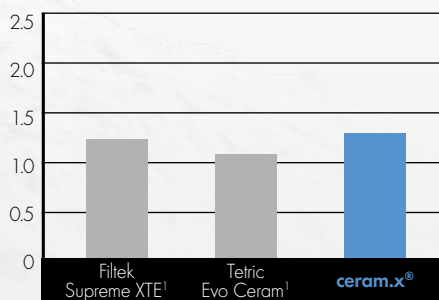
4-point bending after 2 weeks water storage



Lohbauer U and Belli R, 2015

High flexural strength is considered as important by international standards for the use as permanent posterior occlusal stress bearing restorations.

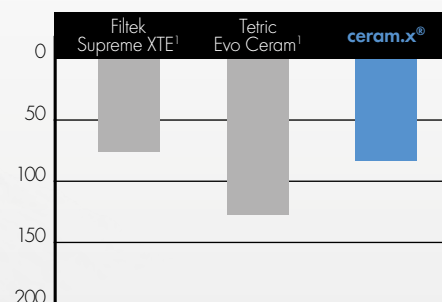
Fracture toughness² [MPa m^{0.5}]



Lohbauer U and Belli R, 2015

High fracture toughness is needed to resist propagation of cracks in the material and improves longevity of a restoration.

Localised wear – maximum depth² [µm]



Latta MA, 2015

Low loss of material is beneficial in occlusal contact areas under chewing forces for a stable occlusion.

¹ Not a registered trademark of DENTSPLY International Inc.

² Data on file; available upon request, see contact details.

**"Excellent handling and modelling,
great mimetic effect!"**

Dr. Ariane Douvier, France

.xcellent

aesthetics made easy

The new **ceram.x[®]** is a universal composite for all cavity classes in the anterior and posterior region. Its distinct chameleon effect allows for a precise and reliable shade match resulting in highly aesthetic restorations with one single translucency.

Anterior restoration



Before



After restorations with ceram.x[®] A3 from 32 to 43.

Ian Cline, UK

Posterior restoration



Tooth 36 with an occlusal caries lesion.



Restoration with ceram.x[®] A2 giving the tooth back its lost anatomy and natural aesthetic appearance.

José Bahillo, Spain

Indirect restoration



SDR[®] placement and preparation.



Indirect restoration with ceram.x[®] A2.



Indirect restoration on 26 and 27 after cementation and polishing.

Manuel Pinon, Spain

For clinical situations, where two translucencies are required, Ceram-X[®] duo+ is recommended.



CompuLes® Tips Intro Kit

Packaging Information

ceram.x® universal CompuLes® Tips Intro Kit

24 CompuLes® Tips à 0.25 g
 (4 x A1; 4 x A2; 8 x A3; 4 x A3.5; 4 x A4)
 1 CompuLes® Tips Gun

607.01.570

ceram.x® universal Syringe Intro Kit

5 Syringes à 3 g (A1; A2; A3; A3.5; A4), Accessories

607.01.550



Syringe Intro Kit

ceram.x® universal Refills

A1 (= VITA®¹ shades A1; B1; C1)
 A2 (= VITA®¹ shades A2; B2; D2)
 A3 (= VITA®¹ shades A3; C2; D3; D4)
 A3.5 (= VITA®¹ shades A3.5; B3; B4; C3)
 A4 (= VITA®¹ shades A4; C4)
 BW (Bleach White)

CompuLes® Tips (16)

607.01.571
 607.01.572
 607.01.573
 607.01.575
 607.01.574
 607.01.576

Syringe

607.01.551
 607.01.552
 607.01.553
 607.01.555
 607.01.554

ceram.x® universal Eco Refills

A2 (= VITA®¹ A2; B2; D2)
 A3 (= VITA®¹ A3; C2; D3; D4)

CompuLes® Tips (52)

607.01.582
 607.01.583



CompuLes® Tips Refill



Syringe Refill

DENTSPLY DeTrey GmbH
 De-Trey-Str. 1
 78467 Konstanz
 GERMANY
 www.dentsply.eu
 Phone +49 (0) 75 31 5 83-0

DENTSPLY Limited
 Building 3
 The Heights, Brooklands
 WEYBRIDGE
 Surrey
 KT13 ONY
 UNITED KINGDOM
 Phone +44 (0) 19 32 85 34 22

For better dentistry

DENTSPLY